

Message from the Chief Executive Officer



CEO, Dr. Kelly Oluoch.

As we usher in 2026, I am pleased to reflect on the remarkable milestones highlighted in this month's Bulletin, each a demonstration of the College's unwavering commitment to excellence, innovation, and service to the country.

One moment that stands out is the recognition of staff and over 50 KMTC students who earned the President's Gold Award. Their achievement reflects the values we strive to instill in our learners: discipline, resilience, leadership, and a deep commitment to community service. These qualities are as critical to healthcare delivery as technical competence, and I commend our students and staff for nurturing a

culture that produces well-rounded professionals.

This spirit of growth is also visible in the progress across our Campuses. At Navakholo Campus, the launch of a modern student hostel, the graduation of the first cohort of Community Health Assistants, and enhanced mobility supported by the National Government Constituencies Development Fund (NG-CDF) show how infrastructure and expansion programmes are strengthening training and bringing healthcare closer to communities. These milestones highlight the value of strategic partnerships in extending our reach and impact.

Our growing collaboration with Amref Health Africa further strengthens this direction by preparing our students and alumni for a dynamic healthcare environment. By integrating entrepreneurship, innovation, and incubation into health training, we are empowering our graduates not only to seek employment but also to create solutions, generate jobs, and respond creatively to real community health challenges.

This forward-looking approach is reinforced by our continued focus on leadership, governance, and institutional

sustainability. The Principals' Strategic Retreat demonstrated the importance of planning, data-informed decisions, and open dialogue in ensuring that KMTC remains resilient, responsive, and future-ready.

I am also proud of our commitment to continuous professional development, exemplified by specialised short courses such as the Upper Extremity Splinting programme, and by partnerships that strengthen access to learning resources, including the long-standing collaboration with Book Aid International. These initiatives reinforce our mission to provide

relevant, high-quality training that directly improves patient outcomes.

As we move into the year, I call upon our staff, students, and partners to remain united in purpose. Together, we will continue to advance KMTC's mandate of producing competent, compassionate, and innovative healthcare professionals who serve with integrity and dedication.

I thank all members of the KMTC fraternity for their hard work and commitment, and I look

forward to another year of shared progress and meaningful impact.

CORE STATEMENTS

VISION:

A globally competitive institution for training human resource for health.

MISSION:

To develop fit-for-purpose middle-level health professionals through transformative training, research, and consultancy.

CORE VALUES

Accountability, Integrity, Responsiveness, Equity, Teamwork, Professionalism, Creativity and innovation.

INSIDE



| ACADEMICS |



| CORPORATE NEWS |



| CSR |



| CAMPUS CORNER |



| APPOINTMENT |

College Celebrates Over 50 Gold Award Winners as President Honours Youth at State House



H.E. President William Ruto (PhD) with the Cabinet Secretary for Youth Affairs, Creative Economy and Sports Mr. Salim Mvurya (3rd right), KMTCC Board Chairperson Mr. Joseph K. Cheruiyot (2nd left), CEO Dr. Kelly Oluoch (4th left), and KMTCC students at State House, Nairobi.

The College stood out prominently among national institutions as H.E. President William Ruto honoured 1,252 young Kenyans at the President's Award Ceremony held at State House, Nairobi, on January 21, 2026. The ceremony, hosted by the President in his capacity as Patron of the President's Award programme, recognised youth who demonstrated exceptional commitment to service, leadership, resilience, and personal development.

Among the awardees were more than 50 KMTCC students who attained the Gold Award, marking a significant milestone for the College and reaffirming its commitment to nurturing well-rounded, disciplined, and community-focused graduates equipped to serve the nation beyond the classroom.

Speaking during a post-event engagement with KMTCC President's Award (PA) Club members, the College Chief Executive Officer, Dr. Kelly Oluoch, congratulated the students for their outstanding discipline, perseverance, and dedication. "Achieving a Gold Award is a head start in life. It takes discipline, commitment, perseverance, and dedication. This

Award opens doors and transforms you into individuals who attract success. It teaches the fundamentals of setting and achieving goals," said Dr. Oluoch.

The CEO emphasised that community service must remain a lifelong commitment, noting that the Award equips students with essential leadership and life skills beyond academics. In line with the President's directive, he reaffirmed KMTCC's commitment to expand and resource the PA Club across all campuses, ensuring more students benefit from the programme.

At the Nairobi Campus, Principal Mr. Joseph Ahomo highlighted the vibrant PA Club culture, citing a talented student band and encouraging more students to join as KMTCC prepares to receive learners under the Competency-Based Education (CBE) system.

Similarly, Eldoret Campus Principal, Mr. Daniel Kimweich, underscored the strategic importance of the PA Club in strengthening KMTCC's brand and producing well-rounded graduates, noting the need for sustained institutional support.

From the Coast region, Mombasa Campus Principal, Dr. Jacinta Mukonzo, encouraged students to use their time in college to develop skills beyond academics and thanked the KMTC leadership for its continued support. Dr. Mukonzo was recognised by the President for her contribution to the growth of the President's Award programme in Kenya and the transformation of young people nationwide.

At Busia Campus, PA Club members demonstrated the true spirit of the Award through adventure and service. The students successfully completed an adventurous journey, scaling Mount Longonot and the Kijabe Hills, building resilience, teamwork, and endurance.

In the service pillar, the students supported the local community by providing sanitary towels to vulnerable pupils at St. Teresa Busia Primary School, promoting dignity, health, and improved school retention among young girls.

As KMTC continues to mould responsible leaders for tomorrow, the College remains committed to creating opportunities for students to explore talents beyond academics, embrace service, and emerge as confident, compassionate, and purpose-driven professionals.



2026 KMTC APPLICATION VIA KUCCPS

Intake: March 2026

Application Dates: 7th - 27th January, 2026

**Online Application Portal:
students.kuccps.ac.ke**

Visit the KUCCPS website
www.kuccps.ac.ke for details



@The.Placement.Service



@KUCCPS_Official



official_kuccps



info@kuccps.ac.ke

Government Applauds KMTC's Role in Driving Digital Healthcare and Advancing UHC



Staff at Longisa County Referral Hospital demonstrate the newly commissioned digital CT scan during Health CS Aden Duale's visit.

The government has commended the College for its leadership in driving the digital transformation of healthcare, a key pillar in the realisation of Universal Health Coverage (UHC).

Specialised programmes, including a Medical Insurance course, have been rolled out by the College to train personnel in claims management, pre-authorisation, and technical operations under the new Social Health Authority (SHA) framework.

Speaking during the launch of Taifa Care at Bomet Campus on January 21, 2026, Health Cabinet Secretary Hon. Aden Duale thanked the College for its role in supporting the country's journey towards affordable and equitable healthcare.

"We are very proud of KMTC for moving with speed to support the government's healthcare agenda," said CS Duale, who was accompanied by Bomet County Governor H.E. Prof. Hillary Barchok and a delegation from SHA.

Taifa Care is a digital platform designed to integrate and streamline health operations nationwide.

The CS reaffirmed the government's commitment to strengthening healthcare delivery at all levels, while recognising the critical role of Community Health Promoters (CHPs) in reaching households at the grassroots.

"We are committed to improving healthcare for all Kenyans, from national referral facilities to the most remote communities. Community Health Promoters are the backbone of

our primary healthcare system, and the government remains fully committed to supporting, training, and equipping them to deliver essential services at the grassroots," he said.

During the visit, CS Duale also commissioned a CT scan and a Platelet Separator Unit at Longisa County Referral Hospital, a move expected to enhance hands-on clinical training for KMTC students.

The Deputy Director, Academics, Dr. Nyawira Mwangi, who represented the KMTC CEO, Dr. Kelly Oluoch, said the College is investing heavily in digital tools, including e-learning platforms and simulation laboratories, to prepare trainees for the digital systems required under the Taifa Care Health Management Information System (HMIS).

Earlier in the day, CS Duale and Governor Barchok co-chaired a high-level interactive forum on Data-Driven Performance and Stakeholder Engagement at the Bomet County Governor's Office. The forum focused on strengthening coordination, accountability, and the delivery of quality healthcare services in line with Kenya's UHC agenda.

The engagement brought together key health-sector stakeholders, including professional unions, private-sector players, faith-based organisations, and development partners.

Also present were the Head of Intergovernmental Relations, Dr. Leah Bii, and the Bomet Campus Principal, Ms. Alice Ongera.

Campus Marks Major Milestones with New Hostel, CHA Graduation, and NG-CDF Support



Co-operatives and Micro, Small, and Medium Enterprises Development Cabinet Secretary Hon. Dr. Wycliffe Oparanya (front row, 3rd left) lays the foundation for the students' hostel.

Navakholo Campus hosted the national leadership, led by the Cabinet Secretary for Co-operatives and Micro, Small, and Medium Enterprises Development, Dr. Wycliffe Oparanya, as the campus celebrated three significant milestones aimed at transforming medical training and community healthcare in the region.

Accompanied by the KMTC CEO, Dr. Kelly Oluoch, the CS presided over the laying of the foundation stone for a new, state-of-the-art seven-storey student hostel. The project, funded through the Government Affordable Housing Programme, is set to increase the campus's accommodation capacity, ensuring more students have access to safe, affordable housing.

In addition, the campus celebrated the graduation of its very first cohort of Community Health Assistants (CHA). These graduates represent a critical addition to Kenya's healthcare workforce, trained specifically to operate at the grassroots level.

Further, to facilitate the smooth movement of students and staff for clinical rotations and community outreach programmes, the campus received a bus donated by the area Member of Parliament, Hon. Emmanuel Wangwe, through the National Government Constituencies Development Fund (NG-CDF).

Hon. Oparanya, speaking on the nexus between the role of KMTC in the health sector and national development, noted that "By equipping young Kenyans with specialised medical skills, the College is creating a workforce that directly

sustains the nation's health, which is the primary driver of productivity." He emphasised that a healthy population is the backbone of a thriving economy, noting that the graduation of Community Health Assistants ensures that healthcare reaches the "last mile," reducing the national burden of disease and allowing more citizens to participate in nation-building activities.

Hon. Wangwe reaffirmed his continued support for KMTC and commended the CEO for his exemplary leadership and flexibility in fostering collaboration. He noted that KMTC's presence and initiatives continue to contribute significantly to the local community's growth and development.

Meanwhile, CEO Dr. Oluoch recognised that "These projects highlight KMTC's commitment to expanding infrastructure and strengthening community-based healthcare training to serve all Kenyans."

Navakholo Campus Principal, Ms. Eileen Washiali, expressed her appreciation to the Navakholo Constituency for its continued support, noting that it was a delight to engage with the community and share the benefits with the KMTC fraternity.

The ceremony, held on January 12, 2025, was also attended by local leadership, including Members of Parliament, Members of the County Assembly, and representatives from the Navakholo NG-CDF, whose partnership was recognised as vital to the campus's rapid growth.

Campus set for major infrastructure upgrade



Molo Member of Parliament Hon. Kimani Kuria (right) with KMTC Registrar Mr. Ronald Wasike and staff members.

Molo Campus is set to receive a major infrastructure upgrade to enhance the learning environment and student experience. The development includes the construction of a modern administration block and a new students' village.

The plans were announced on January 30, 2026, during a campus tour by the area MP, Hon. Kimani Kuria, who was received by the CEO, Kelly Oluoch.

During the visit, Hon. Kuria also assured the Campus of additional improvements, including cabro works on the access road to enhance mobility and accessibility within the Campus. He confirmed that resources will be allocated in the next financial year to support the projects, noting that his office will continue working closely with the College.

He emphasized that the investment supports youth development and strengthens healthcare capacity in the region. The MP reiterated his commitment to transforming KMTC Molo into a centre of excellence for health training.

On his part, Dr. Oluoch reassured students and staff of the College's continued focus on welfare and academic success. He highlighted the importance of access to student loan fa-



CEO Dr. Kelly Oluoch addressing Molo Campus students.

cilities, such as the Higher Education Loans Board (HELB), noting that financial stability is key to helping students stay focused on their studies.

The CEO further announced that the Campus is expected to receive a bus in the next financial year to support student transport to clinical placement sites.

Beyond infrastructure, he encouraged students to remain disciplined, work hard, and value humble beginnings as part of their journey toward professional success.

Also present during the visit were the Registrar, Mr. Ronald Wasike, the Acting Administration Manager, Dr. Priscillah Anuri, and the Principal of Molo Campus, Mr. Richard Korir.

KMTC to Welcome Over 24,000 Students in Historic March 2026 Intake



A Section of KMTC students.

The College is set to admit more than 24,000 learners in its March 2026 intake, marking one of the largest enrolments in the College's history and a major milestone in strengthening Kenya's healthcare workforce.

A total of 21,774 pre-service and 3,200 upgrading vacancies across the College's 92 campuses and six satellites nationwide were advertised. The March 2026 intake exemplifies KMTC's strategic focus on diversifying healthcare training through its over 90 specialised programmes, including Nursing, Clinical Medicine, Medical Engineering, Health Records and Information Management, Health Insurance Management, and emerging digital health disciplines. These programmes are designed to equip learners with the skills and competencies required to address evolving healthcare needs in Kenya and beyond.

Speaking on the significance of the intake, KMTC CEO Dr. Kelly Oluoch noted that the expansion reflects a bold investment in Kenya's health security and workforce development. "By offering over 24,000 training slots across our 98 campuses, we are ensuring equitable access to quality medical education while nurturing professionals who are technically

competent, ethically grounded, and globally competitive," said Dr. Oluoch.

With the application phase concluded, the Kenya Universities and Colleges Central Placement Service (KUCCPS) and the College are undertaking a transparent, merit-based selection process, followed by structured orientation programmes to prepare students for academic excellence and professional growth.

As KMTC approaches its centenary, the incoming cohort joins a legacy of nearly a century of excellence in healthcare training. From Nairobi to Nakuru and across all counties, the March 2026 intake is poised to play a pivotal role in shaping the future of healthcare delivery in Kenya.

Applications for pre-service programmes were conducted through the KUCCPS portal, in line with national placement guidelines. Meanwhile, applications for upgrading and higher diploma courses, targeting practising healthcare professionals seeking career advancement, are being processed through the KMTC admission portal and are still being accepted.

College Outperforms Several Universities in New Webometrics Rankings

The College has recorded a strong performance in the latest Webometrics Rankings released in January 2026.

According to the rankings, KMTC is second among non-university training and research institutions in Kenya, behind the Kenya Forestry Research Institute (KEFRI), with the Kenya School of Government (KSG) in third place.

Nationally, the College is ranked 20th overall, ahead of 46 universities. These include Africa Nazarene University, Kabarak University, Great Lakes University of Kisumu, Chuka University, Rongo University, Zetech University, the University of Eastern Africa, Baraton, and Kisii University.

The University of Nairobi, Kenyatta University, and Jomo Kenyatta University of Agriculture and Technology ranked first, second, and third, respectively.

The results reflect KMTC's strong online visibility, growing research output, and improved access to academic content.

Commenting on the results, CEO Dr. Kelly Oluoch said the ranking reflects years of deliberate effort to strengthen train-



A section of the KMTC Headquarters and Nairobi Campus.

ing quality, expand research, and grow the College's digital footprint.

He noted that KMTC has continued to build its national profile while making academic work more visible and accessible to students, researchers, and health professionals.

"The results reinforce our role as a key player in health training and applied research in Kenya, with growing influence both online and within academic circles," said Dr. Oluoch.

KMTC's performance highlights the College's continued investment in modern learning systems, digital platforms, and research that responds to the needs of the health sector.

The Webometrics Ranking of World Universities is produced by the Cybermetrics Lab, a research group of the Spanish National Research Council based in Madrid. The rankings assess how institutions share knowledge through digital platforms, including the impact and reach of their research and the openness of their academic resources.

PICTORIAL



Lamu Principal, Ms. Riziki Chikophe (left), on January 27, 2026, hosted the County Woman Representative, Ms. Amina Kale (right), for discussions focused on improving and strengthening collaboration at the campus. During the visit, Ms. Amina pledged her support toward the development of infrastructure and expressed commitment to championing student population growth through mobilisation programmes across the county.

Campus Produces 23 President's Award Gold Winners



Members of the Webuye Campus President's Award Kenya Club, together with local authorities, participated in a tree planting activity as part of environmental conservation efforts.

Webuye Campus has reached a major milestone in youth development, with 23 students successfully attaining the President's Award Kenya (PAK) Gold level in 2025, culminating in the conferment of certificates by H.E. President William Ruto. Commenting on the achievement, KMTC Chief Executive Officer, Dr. Kelly Oluoch, lauded the students and staff for their resilience and commitment to holistic development. "The success of our students at Webuye Campus in attaining the President's Award Gold level is a powerful affirmation of our commitment to nurturing well-rounded healthcare professionals," Dr. Oluoch said. He noted that beyond academic excellence, the programme builds character, leadership, discipline, and a strong sense of service to the community, qualities essential to effective healthcare delivery. "I commend the students, Award Leaders, and campus leadership for this outstanding achievement," the CEO added.

The campus joined the President's Award programme in 2023 with an initial enrolment of 30 students. To support its implementation, two

Award Leaders were trained to guide participants through the Bronze, Silver, and Gold levels, ensuring compliance with programme requirements via the Online Record Book (ORB).

Participants engaged in structured activities across the five core pillars of the programme: Skills, Physical Recreation, Voluntary Service, Adventurous Journey, and Residential Project. Through the skills component, students developed talents in leadership, public speaking, coaching, farming, crocheting, singing, cooking, and sports officiating. Physical recreation activities included hockey, volleyball, cycling, swimming, dancing, football, and modelling, all of which promoted fitness and discipline.

Community service featured prominently, with students engaging in environmental cleanups on campus and in the surrounding town, volunteering at hospitals, and fundraising for charity, reinforcing the values of service and social responsibility.

A key highlight of the programme was the Adventurous Journey, which tested participants' endurance and teamwork. Twenty-three students completed a

four-day expedition in Port Victoria, Busia County, covering over 21 kilometres daily under the supervision of certified PAK assessors. A second expedition was later undertaken at Mount Longonot, with all participants successfully assessed and confirmed on the ORB.

The programme concluded with a Residential Project centred on environmental conservation, during which students planted trees in nearby primary schools and contributed to the planting of over 500 seedlings at the upcoming KMTC Ndalù Campus, leaving a lasting environmental legacy.

Despite financial and time constraints, the students demonstrated remarkable resilience and commitment. With support from Award Leaders, campus staff, and the Principal, the cohort persevered to achieve Gold-level success.

The KMTC leadership's support for co-curricular activities, P.A. among them, exemplifies a commitment to holistic education that fosters disciplined, resilient, and community-oriented healthcare professionals beyond mere academic training.

Partnership with Amref Deepens to Advance Health Innovation and Incubation Centres



KMTCC Board Chairperson Mr. Joseah K. Cheruiyot (seated centre), CEO Dr. Kelly Oluoch (seated left) and AMREF's Chief Innovation Officer Ms. Carol Mbidyo with the College's senior managers during the meeting.

The Board of Directors has reaffirmed its support for a partnership between the College and Amref Health Africa to equip students and alumni with entrepreneurial skills to create jobs in the health sector.

The partnership, which has taken shape over recent months, focuses on training students in health entrepreneurship and establishing innovation and incubation centres to support the development and commercialisation of their ideas.

Speaking during a meeting held in Mombasa on January 14, 2025, Board Chairperson Mr. Joseah K. Cheruiyot said the initiative will help graduates create opportunities beyond traditional employment.

“Health training must prepare graduates for realities beyond conventional clinical roles. In today's professional environment, success requires adaptability, innovation, and strong soft skills. Our students must graduate ready to respond to real health challenges in diverse settings,” he said.

The engagement with Amref Health

Africa builds on an existing partnership under the Learning for Life programme, through which more than 80,000 KMTCC students and alumni are receiving training in health entrepreneurship and soft skills.

The programme supports learners in identifying and developing opportunities in areas such as community health initiatives, wellness programmes, digital health solutions, and other health-related ventures.

CEO Dr. Kelly Oluoch said entrepreneurship and soft skills are essential for graduates entering an increasingly competitive labour market.

“These skills are critical for improving employability and enabling our graduates to create opportunities for themselves and others,” he said.

Amref Health Africa's Chief Innovation Officer, Ms. Carol Mbidyo, encouraged KMTCC to establish innovation hubs across its 92 campuses, describing them as spaces where students can turn ideas into practical responses to health-care challenges.

“These hubs can nurture problem solv-

ers who respond to real community needs,” she said.

To strengthen implementation, the programme has already trained 200 faculty members in Nairobi and Nakuru to serve as trainers and mentors, with the content also available on the College's eLearning platform to reach alumni.

The proposed incubation centres will provide structured support for student ideas through mentorship, testing spaces, and guidance to help innovations grow into sustainable solutions, building on the entrepreneurship training already underway.

On the sidelines, the Board and Management will consider governance documents, including the College's Corporate Social Responsibility, and the Environmental, Social, and Governance policies, as well as human resource governance instruments, to strengthen ethical leadership, community engagement, and sustainable institutional growth. They will also hold discussions with Campus Principals, who are in a retreat to chart a path to the College's sustainability.

KMTC champions integration of NCDs and emergency preparedness at Regional Health Security Summit

CEO Dr. Kelly Oluoch participated in a high-level panel discussion during the Eastern Africa Regional Global Health Security Summit 2026 held in Nairobi on January 27, 2026.

The session, hosted at Amref International University, focused on how health training curricula can better prepare health professionals to manage noncommunicable diseases (NCDs) during emergencies.

The breakout session, themed “Resilient People, Resilient Systems: Reframing the Role of NCDs in the Health Security Agenda,” brought together health experts and educators to discuss how training institutions can strengthen health systems through education.

Dr. Oluoch highlighted the urgent need to link NCD care with emergency preparedness in health training. He noted that diseases such as heart disease, diabetes, cancer, and chronic respiratory conditions account for 74 percent of global deaths, with most cases occurring in low- and middle-income countries.

“Health emergencies do not pause chronic illnesses. Our training must prepare health workers to manage NCDs even when systems are under

pressure,” he said.

He emphasized that people living with NCDs face greater risks during disasters when access to medicine and care is disrupted.

He explained that KMTC has already taken steps to respond to this challenge by reviewing its curricula to include prevention, early detection, and management of NCDs. Courses such as Community Health Assistant and Nutrition and Dietetics play a key role in promoting preventive care at the community level.

The CEO also pointed out gaps that still exist in health training. He noted that many programmes focus more on treatment than prevention and are still delivered through traditional lecture-based methods.

“We must shift from purely curative training to prevention-focused approaches while embracing modern delivery models such as simulation and competency-based education,” Dr. Oluoch observed.

KMTC is addressing this through com-

petency-based education, simulation labs, and inter-professional training to help students learn to manage multiple health conditions simultaneously.

Dr. Oluoch further shared that KMTC has introduced a mental health module for all pre-service students and wellness programmes for staff and learners to promote healthy lifestyles.

Through partnerships, including support from the Novo Nordisk Foundation, the College is strengthening training capacity, improving infrastructure, and offering scholarships, especially in underserved areas like Turkana County.

“Regional collaboration, technology integration, and multisectoral partnerships are key to building a health workforce that can respond to both chronic diseases and emergencies,” he added.

Founded in 1927, KMTC is Kenya’s largest middle-level health training institution, with 92 campuses and over 85,000 students. Its graduates form the backbone of the country’s health workforce.



CEO Dr. Kelly Oluoch delivers a keynote address during the event.

Book Aid International CEO Pledges 5,000 New Medical Text Books to the College

A long-standing partnership between KMTTC and Book Aid International was highlighted when the organisation's CEO, Ms. Alison Tweed, visited the College headquarters in Nairobi on January 15, 2025. This collaboration has enabled the College to receive millions of donated books over the years, significantly supporting medical training across its campuses.

Speaking during the engagement, the Deputy Director, Academics, Dr. Nyawira Mwangi, on behalf of the CEO, Dr. Kelly Oluoch, praised the partnership, noting its significant contribution to the College's ability to deliver quality training.

"We have continued to receive the latest editions of textbooks, which have greatly improved student research and learning outcomes," Dr. Nyawira said.



(L-R) Ms. Mildred Abele, Book Aid International CEO Ms. Alison Tweed, Head of Physiotherapy Department Mr. Muli Kangutu, Senior Chief Principal Lecturer Dr. Jebichi Maswan, and Dr. James Gatune

She emphasised that physical books remain central to medical training, even as digital resources continue to expand.

"Physical textbooks allow students to read deeply, reflect, and develop the critical thinking skills required for complex clinical decision-making," she noted, adding that this ultimately translates into improved patient care.

Dr. Nyawira expressed appreciation for the continued support, saying the College remains deeply grateful for the partnership.

Ms. Tweed commended KMTTC's commitment to quality training, describing it as one of the institution's strongest pillars. She also applauded the College's equitable distribution of books

across its campuses, including those in rural areas.

"For those reasons, among others, I am pleased to pledge an additional donation of 5,000 new medical books to the College this year. We want to ensure that newer campuses receive increased access to these resources," Ms. Tweed said.

Coordinated by the Senior Chief Principal Lecturer and Head of Institutional Advancement, Dr. Jebichi Maswan, the partnership ensures that donated medical textbooks reach students in both urban and rural campuses, where access to up-to-date learning materials remains a challenge.

College Leadership Hailed as Growth Strategy Takes Centre Stage at Principals' Retreat



KMTTC Deputy Director Finance, Planning and Administration Ms. Lucy Chebungei addresses participants during the Principals' Strategic Retreat in Mombasa.

The Deputy Director, Finance, Planning and Administration, Ms. Lucy Chebungei, has lauded College Principals for their outstanding leadership, citing the successful graduation of over 22,000 students in 2025 as a testament to the College's robust governance.

Speaking on behalf of the CEO, Dr. Kelly Oluoch, during the official opening of the Principals' Strategic Retreat happening in Mombasa from January 12 to 16, 2026, Ms. Chebungei highlighted the milestone as a reflection of

deep-rooted commitment to academic excellence and teamwork across all campuses.

The retreat, aimed at charting a path to the College's long-term resilience, focuses heavily on strategic planning. Ms. Chebungei urged the Principals to adopt a forward-thinking mindset to ensure the College remains competitive in an evolving educational landscape.

"We must think beyond the present and plan strategically for the future," Ms. Chebungei urged. "It is essential that leadership takes ownership of both current operations and future engagements to ensure the College remains

resilient and responsive to change," she added.

To support this growth, the Deputy Director revealed that the management has already completed a comprehensive collection of staff data from all campuses. This data is expected to serve as a roadmap for future resource allocation and recruitment.

"This data will guide Management in making informed decisions on additional staffing and resource allocation to support our growing student numbers and institutional demands," she added.

The Deputy Director called for transparency during the sessions, emphasising that the institution's challenges can only be solved through "honest dialogue." She encouraged the Principals to engage in constructive discussions to craft practical, long-term solutions for their respective campuses.

Also in attendance were KMTC senior managers.

The retreat continued through the week, with sessions focused on operational efficiency, financial sustainability, and enhancing the student experience across the College's expanding network.

Infrastructure Drive Accelerates Kshs 1.37 Billion Projects Across Campuses

Efforts are being stepped up to complete Kshs 1.37 billion worth of infrastructure projects across KMTC campuses, in fulfilment of the College's commitment to academic excellence, student well-being, and the delivery of quality health training.

Across the country, KMTC campuses are experiencing visible transformation, with projects at various stages of completion. These include the construction and upgrading of tuition blocks, skills laboratories, libraries, administration facilities, and student hostels.

Once completed, the projects are expected to significantly expand training capacity, improve the learning environment, and enhance student welfare across the College's network of campuses.

A spot check revealed intensive construction activity at several campuses.



KMTC students enjoy some of the newly renovated infrastructure at the Karen Campus.

At Karuri Campus, it was a race against time to complete the work, with every corner of the site buzzing with activity. Workers were seen tying metal rods to prepare to erect wall columns, while others smoothed freshly poured concrete floors, getting them ready for plastering. Meanwhile, heavy lorries rumbled in, offloading essential materials including cement, sand, and steel rods, ensuring the project stayed on track.

The new three-storey building will feature 16 classrooms, skills laboratories, computer labs, a library, and adminis-

trative offices.

Similar infrastructure investments are underway at other campuses, including the expansion of tuition blocks, modernisation of skills laboratories, construction of libraries, and upgrading of student accommodation.

These developments are aligned with the College's expanding academic portfolio of over 100 specialised health training programmes, ensuring students learn in environments that support hands-on training, professional competence, and readiness for service within the health system.

Campus receives Kshs. 8 million to boost infrastructure expansion



Resource Mobilisation Manager Mr. Job Nyakado (centre) with Mbooni campus and NG-CDF staff.

Mbooni Campus has stepped up efforts to modernise its facilities to strengthen training capacity and improve the learning environment. On January 28, 2026, the Campus received a Kshs 8 million tender award from the Mbooni National Government Constituency Development Fund (NG-CDF) to support the construction of additional classrooms.

Over the past few years, the Campus, which currently serves 629 students, has benefited from approximately Kshs. 100 million in NG-CDF support. These investments have enabled the construction of 12 classrooms, a 400-capacity hostel, skills laboratories, and computer labs, significantly

enhancing teaching and learning infrastructure.

Speaking while receiving the award, the Resource Mobilization Manager, Mr. Job Nyakado, who represented CEO Dr. Kelly Oluoch, expressed appreciation to the area Member of Parliament, Hon. Erastus Kivasu, for prioritising the Campus in resource allocation. He noted that the strong partnership between KMTC and the NG-CDF has enabled the College to introduce additional academic programmes and expand training opportunities.

Campus Principal Ms. Felistus Kimanzi revealed that the NG-CDF has committed to constructing a two-sto-

rey building to accommodate the new classrooms.

“The funds will support the completion of the first floor, which will house four classrooms and other essential amenities. We expect the project to be completed within the next few months,” she said.

In addition to infrastructure development, the Campus has launched a beautification programme, planting 4,000 tree seedlings to enhance the learning environment and promote environmental sustainability.

Speaking on the infrastructure drive, CEO Dr. Kelly Oluoch noted that the projects are a deliberate investment in the future of health training.

“We have embarked on investing in infrastructure across all our campuses to create better learning spaces and enhance our training standards,” he said.

Alongside physical expansion, the College has strengthened governance and campus management structures to ensure that growth is matched with

accountability. Enhanced supervision and improved compliance with College policies are being implemented to safeguard student welfare and uphold professional standards across campuses.

At Karen Campus, one of the 92 KMTC campuses countrywide, targeted interventions are already taking shape. During the December 2025 holidays, the campus undertook renovations to student hostels.

Further strengthening the campus, a

major infrastructure expansion funded by the Novo Nordisk Foundation (NNF) is scheduled to commence in February 2026. The project will include the construction of four new classrooms.

As KMTC prepares for the March 2026 intake, the ongoing infrastructure developments reflect a deliberate approach to strengthening learning environments across the College.

Occupational Therapy Skills Boosted Through Specialised Upper Extremity Splinting Course



KMTC short courses coordinator Dr. Jebichi Maswan (6th left), Nairobi Campus Deputy Principal Ms. Carol Oyugi (6th right) and Occupational Therapy Head of Department Ms. Eunice Ndirangu (7th left) with the Upper Extremity Splinting Course graduates.

The College successfully concluded a specialised short course on Upper Extremity Splinting in Occupational Therapy at its Nairobi Campus on January 16, 2025. This intensive, skills-based programme was specifically designed to strengthen the practical competencies of occupational therapy practitioners, equipping them to meet the technical demands of modern rehabilitation.

Speaking at the closing ceremony, Short Courses Coordinator Dr. Jebichi Maswan, representing the CEO, Dr. Kelly Oluoch, highlighted the essential nature of this training, noting that “short courses such as this one are critical in bridging the gap between theory and practice.” She emphasised that the ability to craft custom supports for pa-

tients is not merely a technical task but a vital clinical intervention, stating that “upper extremity splinting is a highly specialised skill, and equipping practitioners with these competencies directly improves patient outcomes and the overall quality of care.”

This sentiment reflects KMTC’s broader mission to remain a leading provider of medical education and training, as Dr. Maswan reaffirmed the College’s “commitment to offering relevant, demand-driven training programmes that respond to evolving healthcare needs.”

The curriculum is tailored for practising Occupational Therapists with a minimum Diploma qualification, using a two-week blended learning approach that combines online theo-

retical sessions with hands-on campus practicals. This ensures that therapists not only understand the mechanics of splinting but also execute them with precision in a clinical environment. As the healthcare landscape shifts toward more specialised care, KMTC is calling upon therapists to enhance their expertise and keep pace with advancements in rehabilitation practice.

The event, attended by Nairobi Campus Deputy Principal Ms. Caroline Oyugi, the Head of Department for Occupational Therapy, Ms. Eunice Ndirangu, guests from Kenyatta National Hospital, and the Occupational Therapy Association, marked a milestone for the participants as they received their certificates of completion.

New Course Set to Strengthen Healthcare Leadership in Kenya



Participants review the module content as part of the course curriculum validation process.

A Diploma in Health Administration Management is in its final stages of curriculum development, marking a key milestone in enhancing healthcare leadership and management capacity in the country. The curriculum validation workshop was held over two days at KMTTC Yatta, beginning on January 21, 2026.

Representing the CEO, Dr. Kelly Oluoch, Deputy Director, Academics, Dr. Nyawira Mwangi, emphasised “A hospital’s success is measured by its patient outcomes, and those outcomes are driven by management. This new Diploma in Health Administration is the missing piece of the puzzle.” Dr. Nyawira noted that KMTTC is closing the skills gap to ensure the country’s

health facilities are run as world-class institutions.

“KMTTC is moving beyond training; we are leading a healthcare revolution through administrative professionalisation,” she added.

On his part, the Chairperson of the welfare wing of the Kenya Association of Health Administrators, Mr. Samuel Ondiek, commended KMTTC for its proactive role in addressing crucial skills gaps within the health sector.

“KMTTC is a responsive institution committed to advancing healthcare by ensuring administrators are well-prepared to meet the demands of modern health systems,” he said.

The programme is designed to equip the next generation of health admin-

istrators with the knowledge, skills, and competencies needed to manage efficient, patient-centred, and accountable healthcare facilities, in line with Kenya’s evolving health system requirements.

The workshop brought together participants from the Ministry of Health, Kenyatta National Hospital, and the College’s health systems strengthening consultants, as well as KMTTC faculty and curriculum specialists. This diverse representation aims to ensure that the curriculum responds to national health priorities, is rooted in real-world practice, and aligns with the competencies needed for effective health facility management.

College CEO Inspires Future Health Professionals at KUCCPS Career Conference



KMTc CEO Dr. Kelly Oluoch (right) leads in serving a member of the public at the College's exhibition booth.

CEO, Dr. Kelly Oluoch, on January 28, 2026, engaged prospective students at the ongoing National Career Conference and Exhibition organised by the Kenya Universities and Colleges Central Placement Service (KUCCPS).

The College is among institutions exhibiting at the three-day event taking place from January 27 to 29, 2026, at the Kenyatta International Conference Centre (KICC).

Dr. Oluoch toured the KMTc stand and held one-on-one interactions with learners seeking information about joining the College. Dozens of students gathered at the exhibition booth to understand available programmes and career pathways in the health sector.

The CEO encouraged aspiring health professionals to consider KMTc as their institution of choice, highlighting the College's role in bridging gaps in middle-level health training.

"Joining KMTc is the best thing you can ever do if you want to take your career to the next level," he said.

"Our recent performance in the Webometrics rankings reflects the steady growth of our academic strength and digital visibility," he added.

The College recorded a strong performance in the January 2026 Webometrics Rankings, placing second among non-university training and research institutions in Kenya.

Nationally, KMTc stands 20th overall, ahead of 46 universities.

Dr. Oluoch emphasised the College's training model, which focuses on 70 percent practical and 30 percent theory, equipping students with the hands-on skills required in modern healthcare settings.

This practical orientation has positioned KMTc as a leading health training institution, producing graduates who are workplace-ready and competitive in both local and international job markets.

Learners were advised to stay informed through official KMTc communication channels, noting that while applications for the March 2026 intake have closed, details on the September 2026 intake will be communicated in due course.

"Students should rely on official KMTc platforms for accurate updates on upcoming intakes and career opportunities," he added.

The event continues to offer students an opportunity to explore career options and receive guidance as they prepare for higher education. The conference has brought together students, parents, universities, and TVET institutions under the theme "Informed Career Choices: A Skilled and Competitive Workforce."

APPOINTMENTS

Mr. Richard Ndavi Basil, MCIPS, has been appointed as the College Supply Chain Manager, effective January 12, 2026, succeeding the retired Dr. Silas Njeru. He brings to the role over 18 years of experience in supply chain management, having worked in diverse local and international contexts.

Mr. Basil has served in various leadership capacities, most recently as the Supply Chain Manager at the International Livestock Research Institute (ILRI). Prior to this, he worked with CARE International as Procurement and Fleet Coordinator and with Goal Ireland as Procurement and Logistics Officer.

He holds a Master of Science degree in Supply Chain Management from Jomo Kenyatta University of Agriculture and Technology (JKUAT). He is a licensed procurement practitioner and a full professional member of the Chartered Institute of Procurement & Supply (MCIPS).

Mr. Basil is particularly passionate about leveraging technology and data-driven insights to enhance efficiency, strengthen internal controls, and drive innovation in supply chain processes.

On his appointment, Mr. Basil said: “I am excited to join KMTC and look forward to working with colleagues across the College to strengthen processes, build strong teams, and ensure efficient supply chain operations that support our mission.”

Beyond his professional responsibilities, he is actively involved in community initiatives, especially those that promote education and empower underserved communities, including efforts focused on school development and learning opportunities for vulnerable groups.



PICTORIAL



Makindu Campus staff and students during the FQE prayer day.

PICTORIAL



Port Reitz Campus Principal Mr. Festus Lwambi (4th right) with students and staff during their FQE prayer day.



Wajir Campus staff and students during the FQE prayer day.



Isiolo Campus students and staff during a tree planting exercise at Isiolo School for the deaf on January 31, 2026, to celebrate World Wetlands Day.

PICTORIAL



Mr. Zaire Leparatingat and Ms. Yvonne Kerubo from Bomet Campus during a blood donation exercise held at the Campus grounds on January 30, 2026.



Gatundu- Mutunguru Campus staff and students during the FQE prayer day.



Ms. Susan Gitahi (right) from Gatundu Campus during a mobilisation exercise on January 26, 2026.

TRAINING OPPORTUNITIES 2025/2026 ACADEMIC YEAR (MARCH 2026) PRESERVICE INTAKE

ALL APPLICATIONS FOR PRESERVICE COURSES WILL BE DONE THROUGH THE KUCCPS PORTAL AS DETAILED IN THE PORTAL

SNO	COURSES	SPECIFIC MINIMUM ENTRY REQUIREMENTS
1	Certificate in Community Health Assistant	Mean Grade C-, D+ in English or Kiswahili D in Biology/Biological Sciences D in any of the following: Mathematics, Chemistry, Physics/Physical Sciences, Agriculture, Home Science
2	Certificate in Community Health Nursing	Mean Grade C-, C- in English or Kiswahili and Biology/Biological Sciences D+ in any one of the following: - Chemistry, Physics/Physical Science, Mathematics
3	Certificate in Emergency Medical Technician	Mean Grade of C-, D (Plain) in Biology/Biological Sciences
4	Certificate in Health Records and Information Technology	Mean Grade C-, C- in English or Kiswahili and D in Biology/ Biological Sciences D- in Mathematics and D+ in any one of the following: Physics/Physical Sciences, Chemistry, General Science, Computer Studies, Agriculture, Home Science, Economics, Geography, Commerce and Business Studies
5	Certificate In Medical Engineering	Mean grade D+, D+ in English/Kiswahili and D in Mathematics D- in any one of the following: Physics/Chemistry/Biology/Physical Sciences/Biological Sciences
6	Certificate in Nutrition and Dietetics	Mean Grade D+, D+ in English or Kiswahili and D in Biology /Biological Sciences D in any one of the following: Home Science, Physics, Agriculture, Mathematics, General Science
7	Certificate in Orthopedic Trauma Medicine	Mean Grade C-, C- In English or Kiswahili, and C- in Biology/ Biological Sciences D+ in any one of the following: Physics, Physical sciences, Mathematics, Chemistry, Metal Work, Technical Drawing, Home Science, Agriculture and Computer studies
8	Certificate in Health Insurance Management (NEW)	Mean Grade of D+ (plus) and D+ (plus) in English/Kiswahili D in Biology/Biological Sciences D in any one of the following: Home Science, Physics, Chemistry, Agriculture, Building Construction, Technical Drawing, Electricity or Wood Work
9	Certificate in Public Health	Mean Grade C-, C- in English or Kiswahili C- in Biology/Biological Sciences D in any one of the following: Physics, Chemistry, Mathematics, Physical Science
10	Diploma in Community Health	Mean Grade of C (Plain), C- in English or Kiswahili, D+ in Biology/Biological Sciences. D in any one of the following: Mathematics, Chemistry, Home science, Agriculture, Physics or Physical Science.
11	Diploma in Community Health Nursing	Mean Grade C, C in English or Kiswahili and Biology/Biological Sciences C- in any one of the following: Chemistry, Physics/Physical Science, Mathematics
12	Diploma in Registered Nursing	Mean Grade C, C in English or Kiswahili and Biology/Biological Sciences C- in any one of the following: Chemistry, Physics/Physical Science, Mathematics
13	Diploma in Kenya Registered Nursing Mental Health & Psychiatry	Mean Grade C, C in English or Kiswahili and Biology/Biological Sciences C- in any one of the following: Chemistry, Physics/Physical Science, Mathematics
14	Diploma in Community Oral Health	Mean Grade C, C in English or Kiswahili and Biology/Biological Sciences C- in any two of the following: Physics/Physical Sciences, Chemistry, Mathematics
15	Diploma in Dental Technology	Mean Grade C, C in English or Kiswahili and Physics/Physical Sciences or Chemistry C- in Biology/Biological Sciences and in any one of the following: Metal Work, Physics, Physical Science, Chemistry, Mathematics
16	Diploma in Emergency Medical Technology	Mean Grade of C (plain), D+ in Biology/Biological Sciences
17	Diploma in Health Counselling	Mean Grade C, C in English or Kiswahili and D+ in Biology/Biological Sciences C- in any one of the following: Religious Studies or History
18	Diploma in Health Promotion	Mean Grade C, C in English or Kiswahili and C- in Biology/Biological Sciences D+ in any one of the following: Mathematics, Physics/Physical Sciences, Chemistry

19	Diploma in Health Records and Information Technology	Mean Grade C, C in English or Kiswahili and C- in Mathematics
		D+ in Biology/Biological Sciences
		C- in any one of the following: Physics/Physical Sciences, Chemistry, Computer Studies, Agriculture, Home Science, Economics, Geography, Commerce, Business Studies
20	Diploma In Kenya Registered Nursing & Midwifery	Mean Grade C, C in English or Kiswahili and Biology/Biological Sciences.
		C- in any one of the following: Chemistry or Physics/Physical Science or Mathematics
21	Diploma In Medical Engineering	Mean Grade C, C in English or Kiswahili and C- in Mathematics and Physics/Physical Sciences
		D+ in any one of the following: - Biology/Biological Sciences, Chemistry, Electricity, Metal Work, Technical Drawing
22	Diploma in Medical Laboratory Sciences	Mean Grade C, C in English or Kiswahili and Biology/Biological Sciences and Chemistry/Physical Sciences
		C in any one of the following: - Physics/Physical Sciences, Mathematics
23	Diploma in Medical Social Work	Mean Grade C, C in English or Kiswahili and D+ in Biology/Biological Sciences
		C- in any one of the following: Chemistry, Physics/Physical Sciences, Mathematics, Home Science, Agriculture, Business Studies and Geography, History, CRE and IRE
24	Diploma in Occupational Therapy	Mean Grade C, C in English or Kiswahili and C- in Biology/Biological Sciences
		C- in any one of the following: - Physics/Physical Sciences, Chemistry, Mathematics, Agriculture, Home Science
25	Diploma in Optometry	Mean Grade C, C in English or Kiswahili and Mathematics
		C- in the following: - Biology/ Biological Sciences, Physics/Physical Sciences
26	Diploma in Orthopedic Technology	Mean Grade C, C in English or Kiswahili and C in Biology/Biological Sciences
		C- (Minus) in any two (2) of the following; Physical Science, Chemistry, Woodwork, Metalwork, Technical Drawing, Physics and Mathematics.
27	Diploma in Orthopedic and Trauma Medicine	Mean Grade C, C in English or Kiswahili, C in Biology/Biological Sciences
		C- in any one of the following: Physics/Physical Sciences, Chemistry, Mathematics
28	Diploma in Pharmacy	Mean Grade C, C in English or Kiswahili and Chemistry/Physical Science and Biology or Biological Sciences
		C in any one of the following: - Physics/Physical Sciences or Mathematics
29	Diploma in Physiotherapy	Mean Grade C, C in English or Kiswahili and C- in Biology
		C- in any two of the following: -Chemistry, Mathematics, Physics/ Physical Sciences
30	Diploma in Public Health	Mean Grade C, C in English or Kiswahili and Biology/Biological Sciences
		C- in Mathematics and any one of the following: Physics/Physical Sciences, Chemistry
31	Diploma in Radiography & Imaging	Mean Grade C, C in English or Kiswahili and Physics/Physical Sciences and Biology/Biological Sciences
		C- in any one of the following: - Mathematics, Chemistry
32	Diploma in Nutrition and Dietetics	Mean Grade C-, D+ in English or Kiswahili and D+ in Biology/Biological Sciences
		D+ in Chemistry/Physical Science
		D in any one of the following: Home Science, Agriculture, Mathematics, Physics, Physical Sciences, General Science
33	Diploma in Clinical Medicine & Surgery	Mean Grade C, C in English or Kiswahili and Biology/Biological Sciences
		C- in Chemistry/Physical Sciences
		C- in any one of the following Mathematics, Physics
34	Diploma in Speech and Language Therapy	Mean Grade C plain and C- in English or Kiswahili C- in Biology/Biological Sciences,
		C- in any one of the following; Physics, Chemistry, Mathematics
35	Diploma in Health Insurance Management	C plain in English/Kiswahili
		D+ in Biology/Biological Sciences
		D+ in Mathematics
		D+ in Physics, Chemistry, Physical Science, General Science, Geography, Economics, Home Science, Agriculture, Computer Studies, Commerce, Business Studies
36	Diploma in Mortuary Science	Mean Grade C-(Minus)

TRAINING OPPORTUNITIES 2026/2027 ACADEMIC YEAR (JANUARY 2026 INTAKE) UPGRADING AND HIGHER DIPLOMA APPLICATIONS

The Kenya Medical Training College invites applications from qualified candidates for admission into Medical Courses for the academic year 2026/2027 – MARCH 2026 INTAKE - UPGRADING AND HIGHER DIPLOMA INTAKES in our campuses situated in different parts of the country. The successful candidates will join the college in MARCH 2026. All applications shall be made ONLINE in the KMTC admissions portal (admissions.kmtc.ac.ke) with an application fee of Kshs. 2072 (for higher diploma and upgrading applicants) and Ksh. 500 (for short course applicants) payable via mobile money. A prompt will be sent to the applicants' phone to make payment. Should you require any clarification concerning the application process please call any of the following numbers 0736993813, 0736212060, 0723000429, 0723004516 or send an enquiry email to admissions@kmtc.ac.ke. You can also get help on the application process from the nearest KMTC campus.

UPGRADING COURSES (FROM CERTIFICATE TO DIPLOMA QUALIFICATIONS)

Course	Entry Requirements	Duration	Campus
DEPARTMENT OF COMMUNITY HEALTH NURSING			
1 Diploma in Community Health Nursing (Distance Learning)	Certificate in Community Health Nursing (KECHN). Registration by the Nursing Council of Kenya 2 Years post-graduation experience	2 Years	Kapkatet, Kitui, Lodwar, Muranga Embu, Garissa, Kitale, Meru
DEPARTMENT OF PUBLIC HEALTH			
2 Diploma in Public Health (Upgrading)	Certificate in Environmental Health Sciences	2 years	Embu, Kuria, Lake Victoria, Nakuru, Othaya
DEPARTMENT OF MEDICAL LABORATORY SCIENCES			
3 Diploma in Medical Laboratory Sciences (Upgrading)	Certificate in Medical Laboratory Sciences. Registration by the KMLTB	2 years	Lake Victoria
DEPARTMENT OF MEDICAL ENGINEERING			
4 Diploma in Medical Engineering (Upgrading)	Certificate in Medical Engineering.	2 years	Bomet, Embu, Makindu, Nairobi
DEPARTMENT OF NUTRITION & DIETETICS			
5 Diploma in Nutrition & Dietetics (Upgrading)	Holder of a Certificate in Community Nutrition/Nutrition & Dietetics/Food Science & Nutrition KNEC Certificate in Nutrition & Dietetics for TVET graduates	2 years	Homa Bay, Kapenguria, Karen, Lodwar, Makueni, Thika

Page 1 of 7

KMTC is an ISO 9001:2015 Certified Institution



DEPARTMENT OF ORTHOPEDIC & TRAUMA MEDICINE			
6 Diploma in Orthopaedics and Trauma Medicine (Upgrading)	Certificate in Orthopaedics Plaster Technology/ Certificate in Orthopaedic Trauma Medicine	2 Years	Chuka, Mbooni, Nairobi
DEPARTMENT OF HEALTH RECORDS & INFORMATION TECHNOLOGY			
7 Diploma in Health Records and Information (Upgrading)	Certificate in Health Records and Information Technology from KMTC OR from any other institution accredited by the Health Records and Information Management Board (HRIM) and completed in at least 2 years. Registration by the HRIM Board	2 years	Chwele, Isiolo, Lamu, Msambweni, Nairobi, Rera, Teso
DEPARTMENT OF HEALTH PROMOTION & COMMUNITY HEALTH			
8 Diploma in Community Health (Upgrading)	Certificate in Community Health from KMTC	2 years	Chemolingot, Embu, Imenti, Iten, Kabarnet, Kakamega, Kangundo, Kapenguria, Kuria, Lake Victoria, Lodwar, Lugari, Makindu, Makueni – Mbuvo, Manza, Mbooni, Mosoriot, Nairobi, Navakholo, Ndihiwa, Nyahururu, Nyamache, Othaya, Port Reitz, Rachuonyo, Sigowet, Tana River, Taveta, Teso, Trans-Mara, Ugenya, Webuye
DEPARTMENT OF CLINICAL MEDICINE			
9 Diploma in Mortuary Science (Upgrading)	Certificate in Mortuary Science from a recognized institution	2 Years	Kisumu, Nairobi
10 Diploma in Emergency Medical Technology (Upgrading)	Certificate in Emergency Medical Technician from KMTC or any other recognized institution	2 years	Eldoret, Makindu, Nairobi

HIGHER DIPLOMA COURSES

S/No	Course	Minimum Entry Requirements	Course Duration	Campus
DEPARTMENT OF NURSING				
1. Higher Diploma in:				
	Critical Care Nursing		2 years	Isiolo, Kilifi, Nairobi
	Family Health Nursing		2 years	Nairobi
	Higher Diploma in Ophthalmic Nursing		2 years	Nairobi
	Nephrology Nursing	Diploma in Registered Nursing or Community Health Nursing (KRN/ KRCHN)	2 years	Nairobi
	Oncology Nursing		2 years	Mosoriot
	Palliative Care Nursing		2 years	Nairobi
	Paediatric Nursing		2 years	Kisumu
	Perioperative Nursing		2 years	Nairobi
	Kenya Registered Nurse Anaesthesia		2 years	Kisii, Mombasa

Page 2 of 7

KMTC is an ISO 9001:2015 Certified Institution



DEPARTMENT OF PUBLIC HEALTH				
2. Higher Diploma in Public Health:				
	Epidemiology	Diploma in Environmental Health Sciences, KRCHN, Clinical Medicine, Medical Laboratory Sciences, Pharmacy, Nutrition, Health Records & Information, Community Oral Health	2 years	Nairobi
DEPARTMENT OF HEALTH PROFESSIONS EDUCATION				
i	Higher Diploma in Health Systems Management (Distance Learning)	Diploma in a Health related course or a BSc. In health related course from a recognized institution	2 years	Nairobi
ii	Higher Diploma in Health Administration	Diploma in a Health-related field or its equivalent from a recognized institution or a Diploma in a Management related field e.g. Business Administration or any other relevant field	2 years	Nairobi
iii	Higher Diploma in Health Professions Education	Diploma in any one of the Health Care professions, basic knowledge in Computer applications	2 years	Nairobi
DEPARTMENT OF CLINICAL MEDICINE & SURGERY				
	Higher Diploma in Addictive Sciences	Diploma in any health related course from KMTCC OR any other recognized institution	2 years	Mathare
DEPARTMENT OF RADIOGRAPHY & IMAGING				
	Higher Diploma in Radiography & Imaging (Ultrasonography)	Diploma in Medical Imaging Sciences or its equivalent	2 years	Eldoret, Kisumu
	Higher Diploma in Radiography & Imaging – (Radiation Therapy)	Diploma in Radiotherapy or equivalent/Diploma in Radiography/	2 years	Eldoret
	Higher Diploma in Radiography & Imaging – (Computed Tomography)	MIS Diploma in Radiography and Imaging (Medical Imaging Science) or its Equivalent from a recognized training institution	2 years	Eldoret
	Higher Diploma in Radiography & Imaging – (Magnetic Resonance Imaging)	Diploma in Radiography and Imaging (Medical Imaging Science) or its Equivalent from a recognized training institution	2 years	Eldoret



DEPARTMENT OF PHYSIOTHERAPY				
	Higher Diploma in Orthopedic Manual Therapy	Bsc. Physiotherapy or Diploma in Physiotherapy	2 years	Nairobi
	Higher Diploma in Neuro-rehabilitation	Diploma in Physiotherapy/ BSc Physiotherapy	2 years	Nairobi
DEPARTMENT OF OCCUPATIONAL THERAPY				
	Higher Diploma in Occupational Therapy (Community Based Rehabilitation)	Diploma in Occupational Therapy from a recognized institution	2 years	Nairobi
	Higher Diploma in Occupational Therapy (Renal Rehabilitation)	Diploma in Occupational Therapy from a recognized institution	2 years	Nairobi
DEPARTMENT OF ORTHOPAEDIC TECHNOLOGY				
	Higher Diploma in Orthopaedic Technology (Orthotics)			
	Higher Diploma in Orthopaedic Technology (Prosthetics)	Diploma in Orthopaedic Technology	2 years	Nairobi
DEPARTMENT OF OPTOMETRY				
	Higher Diploma in Optometry (Contact Lenses)	Diploma in Optometry/ Diploma in Opticianry	2 years	Nairobi
DEPARTMENT OF PHARMACY				
	Higher Diploma in Renal Pharmacy	Diploma in Pharmacy OR Diploma in Pharmaceutical Technology from an institution recognized by the Pharmacy and Poisons Board	2 years	Nairobi
	Higher Diploma in Industrial Pharmacy	Three Years Post Qualification Working Experience in the Medical Field Enrolled with the Pharmacy & Poisons Board Applicants must have met the Minimum Entry Requirements for a Diploma in Pharmacy/Pharmaceutical Technology		



DEPARTMENT OF NUTRITION AND DIETETICS

Higher Diploma in Nutrition and Dietetics (Renal Nutrition)	Diploma in Nutrition & Dietetics /Diploma in Community Nutrition from KMTC or any other institution recognized by KMTC Bsc. In Nutrition from a recognized institution Registration by the Kenya Nutritionists and Dieticians Institute (KNDI) and holder of a valid practising license from KNDI	2 years	Karen (Nairobi)
Higher Diploma in Nutrition & Dietetics (Nutrition Surveillance)	Diploma in Nutrition & Dietetics /Diploma in Community Nutrition or Diploma in Public Health from KMTC or any other institution recognized by KMTC Bsc. In Nutrition or Bsc. In Public Health from a recognized institution Registration by the relevant regulatory body		

8. DEPARTMENT OF MEDICAL ENGINEERING

Higher Diploma in Medical Engineering (Diagnostic Equipment)	Diploma in Medical Engineering from KMTC or any other recognized institution. MUST satisfy the common admission requirements for diploma in Medical Engineering at Kenya Medical Training College (KMTC)	2 years	Eldoret
Higher Diploma in Medical Engineering (Therapeutic Equipment)		2 years	Eldoret
Higher Diploma in Medical Engineering (Dialysis)		2 years	Eldoret

DR. KELLY OLUOCH
CHIEF EXECUTIVE OFFICER
JANUARY 2026

Page 5 of 7

KMTC is an ISO 9001:2015 Certified Institution



KENYA MEDICAL TRAINING COLLEGE
Training for Better Health



The following short courses are on offer in various campuses. Short courses are offered to individuals, corporates or tailor-made for organizations. Enroll today to meet your Continuous Professional Development (CPD) requirements and remain relevant in your profession. Applications are made online by logging into KMTC portal - available at www.kmtc.ac.ke, choose the option short courses and follow the prompts.

Course	Description	Target Group/Minimum requirements	Campus	Duration	Fees (KES)
HIV Training and Counselling services (HTS)	Prepares participants to provide comprehensive HIV Testing Services (HTS)- accredited by Nascop)	Individuals interested in working in HIV/AIDS programs, with minimum Certificate in any health-related course	Lake Victoria, Nairobi, Kisumu, Machakos, Homa Bay, Nakuru Mwingi, Nyeri, Kaptuma, Meru	3 weeks fulltime	24,500
Adherence Counselling	Equips participants with knowledge & skills to motivate persons living with HIV/AIDS to maintain their treatment and adhere to guidelines provided	Those with certificate in HTS, health or social sciences, counselling community health & development.	Nairobi Lake Victoria Machakos	1 Week full time + 1 month practicum/mentorship	16,000
Echocardiography	Participants acquire skills and competences in the generation and interpretation of images of the heart and blood vessels using ultrasound	Radiographers, Doctors Clinical officers and Nurses with minimum Diploma with professional registration	Nairobi	6 months (blended online & on campus)	150,000
Course	Description	Target Group/Minimum requirements	Campus	Duration	Fees (KES)
Point of Care Ultrasound	Prepares participants to obtain and interpret ultra sound images to help with obstetrics care	Doctors Nurses Clinical officers Minimum Diploma with professional registration	Nairobi	6 months (blended online & on campus)	90,000
Monitoring & evaluation	Provides participants with requisite competences to design projects, ensure they are on track, evaluate and demonstrate accountability	Project Officers, health information officers and anyone involved in designing or monitoring interventions (minimum Diploma)	Nairobi Chwele Murang'a Siaya	6 weeks blended online and on campus with practicum.	60,000
Safe Phlebotomy	Participants gain knowledge and skills to safely draw blood, handle equipment and avoid occupational exposure	Individuals interested in drawing blood for diagnostic purposes with a minimum D+(plus) in KCSE	Nairobi, Port Reitz, Lake Victoria, Nyeri, Kitui, Machakos, Meru, Kisii	5 days full time	Ksh 20,000 KMTC Students Ksh 10,000
Integrated BLS/ First Aid	Empowers participants to prevent and manage life threatening emergencies.	Drivers, Police, Security personnel, healthcare workers, carers & anyone who maybe be required to attend to emergency	Nairobi	5 days full time	20,000

Page 6 of 7


KMTC is an ISO 9001:2015 Certified Institution



Regional anaesthesia and Acute pain Management	Prepares participants to perform regional blocks, manage acute pain and improve perioperative care, while using point of care ultrasound.	HND in Anaesthesia (Clinical Medicine or Nursing)	Nairobi	6 months fulltime	120,000
Upper Extremity Splinting in Occupational therapy	Prepares participants to manage injuries and conditions of the upper extremity through splinting	Practicing Occupational therapists (minimum Diploma)	Nairobi	2 weeks Blended (online & on campus).	25,000
Community Mental Health	Prepares participants to promote mental health, provide mental health 'first aid', refer clients, and support recovery & community integration	Community based workers, Community Health promoters & community gatekeepers. Minimum- KCPE/ability to read and write.	Mathari Port Reitz Muranga	12 weeks Blended- Online and on campus	25,000
Sign Language for Health workers	Prepares healthcare workers to communicate in sign language, helping the deaf access healthcare	Health workers interested in supporting the deaf; minimum requirement certificate	Bungoma, Nairobi, Makindu, Muranga, Kisii, Eldoret, Nakuru	6 months (3 fulltime & 3 practicum)	40,000
NCLEX-RN®	Prepares Nurses to sit for the NCLEX-RN exam (review of nursing content and test taking strategies)	Registered nurses	Mathari	12 weeks, Online evening classes. Intake- bimonthly	Ksh. 20,000 USD 200 for non-EAC citizens KMTC students Ksh 10,000
Management of Hemophilia, allied bleeding disorders and sickle cell disease	Prepares participants to work with haemophilia, sickle cell disease and other allied bleeding disorders; focusing on awareness, advocacy, diagnosis and management.	Healthcare workers working/ interested in working in haemophilia/ sickle cell clinics.	Nairobi, Mombasa and Kisumu	5 days on campus 5 days clinical placement	Kenyan Ksh 25,000 International USD 350. KMTC students Ksh 10,000
Health Care Assistant	This course prepares trainees to provide hands-on care to patients/clients in a variety of settings, including hospitals, homes and other institutions of care	Individuals with a passion for patient care and have attained minimum D plain in KCSE or its equivalent	Busia, Butula, Chwele, Homa Bay – Mbita Satellite, Ikolomani, Kapenguria, Kinangop, Kuria, Lugari, Makueni Makueni – Mbuvi, Marimanti, Maua, Mbooni, Mombasa, Narok, Rachuonyo, Rera, Tana River, Taveta, Ugenya, Ugunja, Yatta	1 year, blended online & physical with practical sessions	Ksh. 82,200

DR. KELLY OLUOCH
CHIEF EXECUTIVE OFFICER
JANUARY 2026

Page 7 of 7

KMTC is an ISO 9001:2015 Certified Institution 



**KENYA MEDICAL
TRAINING COLLEGE**
Training for Better Health

Jiunge Fee Payment Procedure

As at August, 2024



1
Jiunge
Website

Visit <https://www.jiunge.com/>
Click on Pay Fees

Log in to the Jiunge website.
Log in to the email you used to
sign up and click "Verify account."
Use your Email and Password to
log in to your Jiunge account.

Jiunge
Account

2

3
OTP

An OTP will be sent to the email
used for registration. The OTP
expires in 30 seconds.
Enter the OTP to log in



On the Homepage Search for "Kenya
Medical Training College".
Select and add to Home Page

KMTC

4

5
Registration
Number

Enter the Registration number
Then click on "Add".

Select the service you wish to
pay for, then tap "Pay."
Enter the amount you want to
pay and click "Continue."

Services

6



7
Payment
Mode

Select payment Mode e.g Mpesa, bank
For Mpesa (To Edit the number to make
payment. Click here option and edit
the number) Click initiate payment.

Click on "Initiate Payment".
An M-Pesa prompt will appear;
enter your M-Pesa PIN to
complete the transaction.

Initiate
Payment

8

Note: "Ensure you use an active EMAIL account"
"You can only use your PHONE NUMBER ONCE to create an account"



@KMTCOfficial



www.kmtc.ac.ke

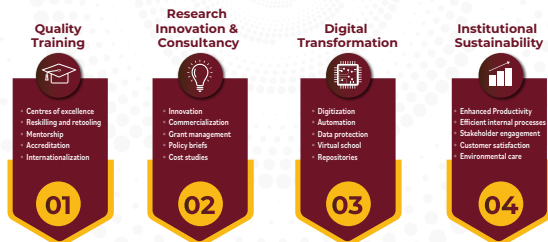
2023 - 2028 STRATEGIC PLAN

Vision

A globally competitive institution for training Human Resource for Health

Mission

To develop fit-for-purpose middle-level health professionals through
transformative training, research and consultancy



Advancing health professions' education through transformative training, research & consultancy



**KENYA MEDICAL
TRAINING COLLEGE**
Training for Better Health



@KMTCOfficial



www.kmtc.ac.ke



**KENYA MEDICAL
TRAINING COLLEGE**
Training for Better Health

HOW WELL DID WE SERVE YOU?

In order to help us continually improve your experience,
we would like to ask for a minute of your time to rate
our services



Scan the QR code or type in the URL
<https://forms.gle/vDChB6CDM8cp9xkT9>
to leave us a review



@KMTCOfficial

For More Information Contact: The Chief Executive Officer, Kenya Medical Training College
P.O. Box 30195-00100, Nairobi. Tel: 020-2725711/2/3/4, 020-2081822/3, 0737-352543 / 0706-541869
Email: info@kmtc.ac.ke Website: www.kmtc.ac.ke



**KENYA MEDICAL
TRAINING COLLEGE**
Training for Better Health

For More Information Contact:

The Chief Executive
Officer, Kenya Medical
Training College

P.O. Box 30195-00100,
Nairobi.

Tel: 020-2725711/2/3/4,
020-2081822/3,
0737352543 / 0706-
541869

Email: info@kmtc.ac.ke.

Website: www.kmtc.ac.ke.



@KMTCOfficial

Photography

Corporate
Communications

Creative Design

Mr. Brian Agunda

EDITORIAL ADVISOR

Chief Executive Officer Dr. Kelly Oluoch

EDITOR

Ms. Onsomu Marcellah

SUB EDITORS

Mr. Hezron Ochiel
Mr. Nelson Mapesa
Ms. Lynette Gathigia

EDITORIAL COMMITTEE MEMBERS

Ms. Lucy Chebungei
Ms. Caroline Muchina
Dr. Kenneth Riany
Mr. Ronald Wasike
Mr. Job Nyakado
Mrs. Lilian Kemboi
CPA Edwin Omondi

EDITORIAL COMMITTEE CO-OPTED MEMBERS

CPA Jones Mwanga
Ms. Jane Wanjogo
Ms. Caroline Oyugi
Dr. Marsellah Ogendero
Mr. Daniel Kimwetich
Mr. Amos Kipsumbai
Ms. Viola Kipkemoi
Ms. Angella Kanini

CONTRIBUTORS

Ms. Lynette Gathigia
Mr. Brian Agunda
Mr. Victor Kyalo
Mr. Evans Ngara
Ms. Diana Katanu
Ms. Anne Kihima
Ms. Shelly Agosa
Ms. Immaculate Moragwa